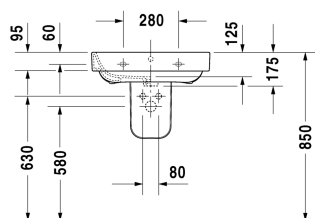
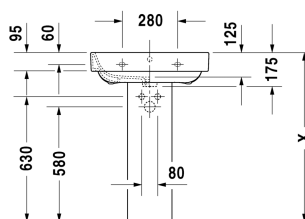
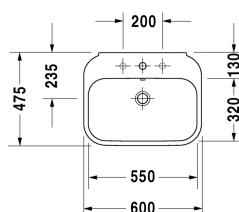


Happy D.2 Washbasin # 2316600000

|< 600 mm >|



Washbasin	Dimension	Weight	Order number
with overflow, with tap platform, overflow clip chrome included, underneath glazed, 600 mm			
Colors			
00 White Alpin			
Variant			
●	600 x 475 mm	19.500 kilogram	2316600000
Sanitary ceramics with the special WonderGliss surface finish will remain clean and attractive-looking for a long time to come. When ordering WonderGliss please add a "1" as eleventh digit to the model number.			
Accessory			
Design Siphon		1.500 kilogram	005036
Suitable products			
Siphon cover for # 231665, 231660, 210 x 310 mm	210 x 310 mm		085828
Pedestal for # 231665, 231660,			085827
Recommended faucets			
Single lever basin mixer M ceramic cartridge, Projection 113 mm, flexible connection hoses 3/8", aerator adjustable, normal spray, recommended operating pressure 1 - 5 bar, with pop-up waste set,			C11020001

Happy D.2 Washbasin # 2316600000

|< 600 mm >|

Single lever basin mixer M ceramic cartridge, Projection 113 mm, flexible connection hoses 3/8", aerator adjustable, normal spray, recommended operating pressure 1 - 5 bar, without pop-up waste set,	C11020002
Single lever basin mixer M FreshStart ceramic cartridge, in centre position cold water, projection 135 mm, flexible connection hoses 3/8", flow rate 5,0 l/min (3 bar), normal spray, connection size DN15, maximum temperature can be adjusted on installation, recommended operating pressure 1 - 5 bar, with pop-up waste set,	TU1021001
Single lever basin mixer M FreshStart ceramic cartridge, in centre position cold water, projection 135 mm, flexible connection hoses 3/8", flow rate 5,0 l/min (3 bar), normal spray, connection size DN15, maximum temperature can be adjusted on installation, recommended operating pressure 1 - 5 bar, without pop-up waste set,	TU1021002
Single lever basin mixer M ceramic cartridge, projection 135 mm, flexible connection hoses 3/8", flow rate 5,0 l/min (3 bar), normal spray, connection size DN15, maximum temperature can be adjusted on installation, recommended operating pressure 1 - 5 bar, without pop-up waste set,	TU1020002
Single lever basin mixer M ceramic cartridge, projection 135 mm, flexible connection hoses 3/8", flow rate 5,0 l/min (3 bar), normal spray, connection size DN15, maximum temperature can be adjusted on installation, recommended operating pressure 1 - 5 bar, with pop-up waste set,	TU1020001

All drawings contain the necessary measurements which are subject to standard tolerances. They are stated in mm and are non-binding. Exact measurements, in particular for customised installation scenarios, can only be taken from the finished piece.