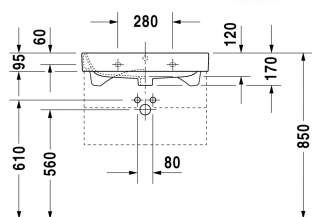
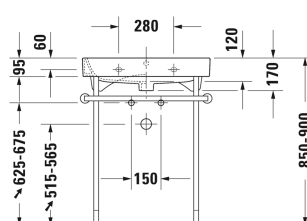
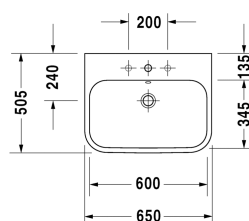


Happy D.2 Washbasin, furniture washbasin # 2318650000

| < 650 mm > |



6364 Happy D.2

Washbasin, furniture washbasin	Dimension	Weight	Order number
with overflow, with tap platform, overflow clip chrome included, underneath glazed, 650 mm			
Colors			
00 White Alpin			
Variant			
●	650 x 505 mm	21.000 kilogram	2318650000
Sanitary ceramics with the special WonderGliss surface finish will remain clean and attractive-looking for a long time to come. When ordering WonderGliss please add a "1" as eleventh digit to the model number.			
Accessory			
Space saving siphon	1 1/4" mm	0.400 kilogram	005076
Design Siphon		1.500 kilogram	005036
Suitable products			
Metal console height adjustable +50 mm, chrome, for washbasin # 231865,			003078
Vanity unit wall-mounted 2 drawers, upper drawer including cut-out for siphon and siphon cover, for Happy D.2 # 231865 (625 x 490 mm not ground), 625 x 490 mm			HP4386
Recommended faucets			

Happy D.2 Washbasin, furniture washbasin # 2318650000

| < 650 mm > |

Single lever basin mixer M ceramic cartridge, Projection 113 mm, flexible connection hoses 3/8", aerator adjustable, normal spray, recommended operating pressure 1 - 5 bar, with pop-up waste set,	C11020001
Single lever basin mixer M ceramic cartridge, Projection 113 mm, flexible connection hoses 3/8", aerator adjustable, normal spray, recommended operating pressure 1 - 5 bar, without pop-up waste set,	C11020002
Single lever basin mixer M FreshStart ceramic cartridge, in centre position cold water, projection 135 mm, flexible connection hoses 3/8", flow rate 5,0 l/min (3 bar), normal spray, connection size DN15, maximum temperature can be adjusted on installation, recommended operating pressure 1 - 5 bar, with pop-up waste set,	TU1021001
Single lever basin mixer M FreshStart ceramic cartridge, in centre position cold water, projection 135 mm, flexible connection hoses 3/8", flow rate 5,0 l/min (3 bar), normal spray, connection size DN15, maximum temperature can be adjusted on installation, recommended operating pressure 1 - 5 bar, without pop-up waste set,	TU1021002
Single lever basin mixer M ceramic cartridge, projection 135 mm, flexible connection hoses 3/8", flow rate 5,0 l/min (3 bar), normal spray, connection size DN15, maximum temperature can be adjusted on installation, recommended operating pressure 1 - 5 bar, without pop-up waste set,	TU1020002
Single lever basin mixer M ceramic cartridge, projection 135 mm, flexible connection hoses 3/8", flow rate 5,0 l/min (3 bar), normal spray, connection size DN15, maximum temperature can be adjusted on installation, recommended operating pressure 1 - 5 bar, with pop-up waste set,	TU1020001

All drawings contain the necessary measurements which are subject to standard tolerances. They are stated in mm and are non-binding. Exact measurements, in particular for customised installation scenarios, can only be taken from the finished piece.