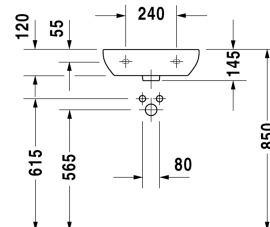
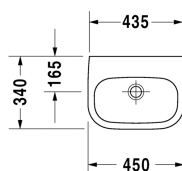
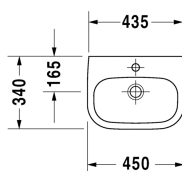


D-Code Handrinse basin Med # 07074500002 / 07074500702

|< 450 mm >|



Handrinse basin Med	Dimension	Weight	Order number
without overflow, with tap platform, underneath glazed, 450 mm			
Colors			
00 White Alpin			
Variant			
●	450 x 340 mm	10.200 kilogram	07074500002
☒	450 x 340 mm	10.200 kilogram	07074500702
Recommended faucets			
Single lever basin mixer S ceramic cartridge, Projection 101 mm, flexible connection hoses 3/8", aerator adjustable, normal spray, chrome, maximum temperature can be adjusted on installation, recommended operating pressure 1 - 5 bar, without pop-up waste set,			B11010002
Single lever basin mixer S ceramic cartridge, Projection 101 mm, flexible connection hoses 3/8", aerator adjustable, normal spray, chrome, maximum temperature can be adjusted on installation, recommended operating pressure 1 - 5 bar, with pop-up waste set,			B11010001

All drawings contain the necessary measurements which are subject to standard tolerances. They are stated in mm and are non-binding. Exact measurements, in particular for customised installation scenarios, can only be taken from the finished piece.