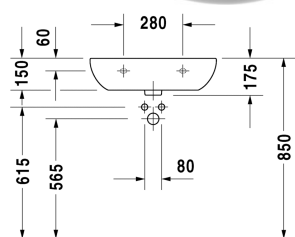
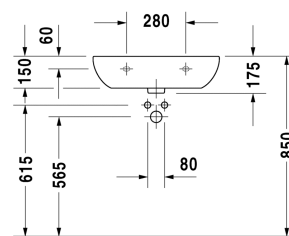
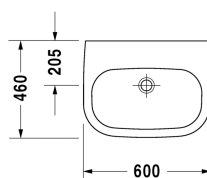
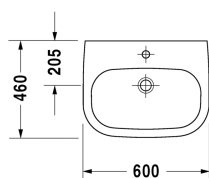


D-Code Washbasin Med # 23116000002 / 23116000702

|< 600 mm >|



Washbasin Med	Dimension	Weight	Order number
without overflow, with tap platform, underneath glazed, 600 mm			
Colors			
00 White Alpin			
Variant			
●	600 x 460 mm	17.800 kilogram	23116000002
☒	600 x 460 mm	17.800 kilogram	23116000702
Recommended faucets			
Single lever basin mixer M ceramic cartridge, Projection 139 mm, flexible connection hoses 3/8", aerator adjustable, normal spray, chrome, maximum temperature can be adjusted on installation, recommended operating pressure 1 - 5 bar, with pop-up waste set,			B11020001
Single lever basin mixer M ceramic cartridge, Projection 139 mm, flexible connection hoses 3/8", aerator adjustable, normal spray, chrome, maximum temperature can be adjusted on installation, recommended operating pressure 1 - 5 bar, without pop-up waste set,			B11020002

All drawings contain the necessary measurements which are subject to standard tolerances. They are stated in mm and are non-binding. Exact measurements, in particular for customised installation scenarios, can only be taken from the finished piece.